

# PROFICY® HISTORIAN 2024



Powerful industrial time-series and A&E data collection for cloud-based or on-premise storage & analysis

## Best-in-class Historian from edge to cloud with data analysis in context

Proficy Historian from GE Vernova is an analyst-recommended historian software solution that collects your industrial time-series and Alarms & Events (A&E) data needed to analyze asset and process performance, so you can drive greater business value.

The emergence of cloud-based Industrial Internet of Things and big data solutions has spurred continued investment in our historian. With decades of experience and tens of thousands of successful customer installations around the world, Proficy Historian changes the way companies perform and compete by making data useful.

Proficy Historian 2024 improves scale and security, eases administration, and optimizes operations with ready-to-use AI/ML predictive analytics. Proficy Historian 2024 features enhancements to horizontal scalability, collectors, security, APIs, and cloud hyper-scalability. This new version also includes Sparkplug B-MQTT enhancements to leverage IoT, trending enhancements, and connectivity to the Quicksight Q interface in AWS. Speed administration with Configuration Hub enhancements, enterprise model support, ETL performance benchmarking, and more.

### OUTCOMES BY DESIGN

- Level up your data governance with analyst-recommended, world-class OT data management – in the cloud or on-prem
- Achieve fast time to value with simple installation and easy-to-use web clients with integrated tag searching and drag-and-drop features
- Secure-by-design data collection, storage, retrieval, and analysis
- Small, powerful footprint, scaling from small applications to hundreds of users and 100 million data points / tags
- Take advantage of data analysis in asset model context with the time-saving trend analysis card
- Support high availability with data redundancy
- Leverage continuous and highly scalable data read and write functionality
- Central management of remote data collectors to reduce maintenance costs and downtime

## 01 Achieve data analysis in context for optimization & continuous improvement

With Proficy Historian, users can analyze data in context via Proficy Operations Hub and the Historian Analysis run-time application, which are available at no additional cost with Proficy Historian Standard and Enterprise versions.

The combination of Proficy Historian and Proficy Operations Hub provides a powerful data management solution with asset model context and visualization. Users receive data aggregation across multiple sources or historians, ability to define an asset model including tag mapping, and advanced trend analysis.

Proficy Historian also includes an Excel Add-In for Proficy Operations Hub, enabling users to query historical data based on the asset model.

## 02 Improve data security & enable enterprise-wide industrial data management

With data security as our highest priority, Proficy Historian offers common and shared User Account Authentication (UAA). Integrated with LDAP, this feature eases security, allowing users to choose the common UAA deployed by other productions in their application.

Additionally, for enterprise-wide deployments, Proficy Historian features a model for cross-enterprise data access, scalability to 100 million tags, and the world's only cloud-native historian innovation.

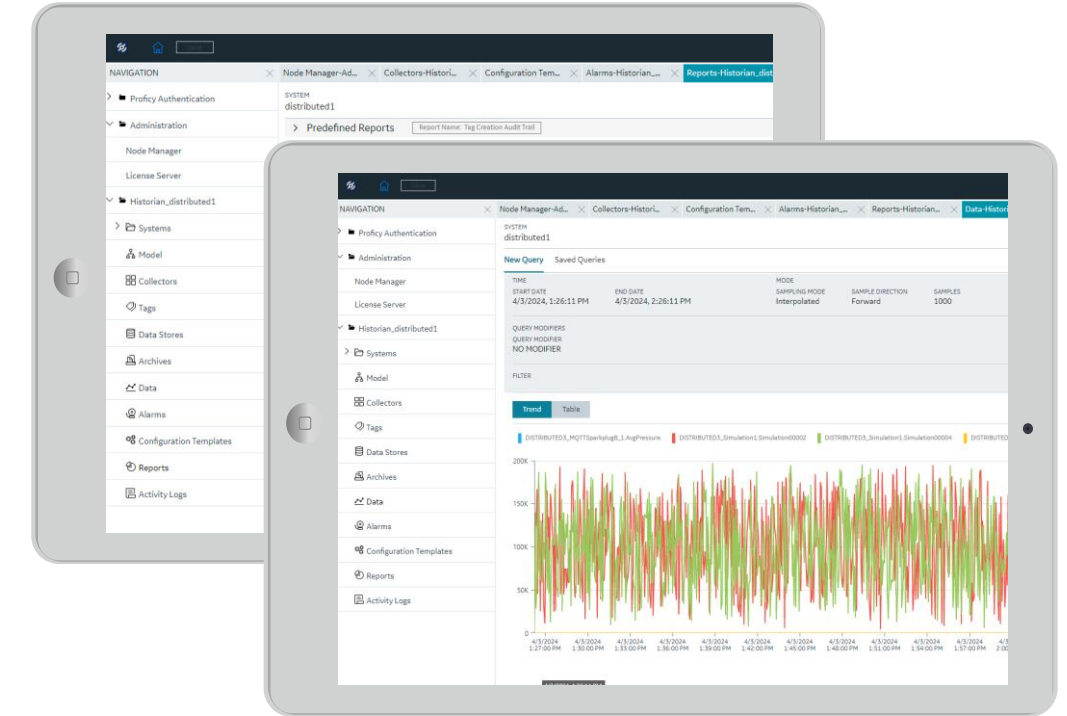
## 03 Simplify OT data governance at scale & reduced costs

Proficy Historian installs in minutes and offers a small footprint yet scales to support hundreds of users across an enterprise.

This OT data solution significantly simplifies Historian management and saves time with an HTML5-based administrator.

Additionally, Proficy Historian has the easiest Remote Collector Management on the market with industry-leading centralized administration.

Increasing ease of use and value across the Proficy portfolio, Proficy Historian features model integration with iFIX and CIMPLICITY HMI/SCADA as well as Proficy Operations Hub and Proficy Plant Applications.



## 04 Speed configuration and ease connectivity for IoT applications

Connect your machine data with an existing collector or build your own using our SDK. Proficy Historian supports MQTT end points and enhanced hybrid on-prem/cloud and full cloud data models with the ability to select data, frequency, and rate of change – all while leveraging GE Vernova's rich data aggregation and collection capabilities.

Collectors can send data to your local Historian or to cloud-based Azure, AWS, Google, and GE Vernova applications. Furthermore, Proficy Historian includes an optionally installed OPC UA server, password and certificate-based security, and more.

*"No longer is there a default choice in historians. If [GE Vernova's] Proficy Historian is not on your short list, it certainly should be.*

*[GE Vernova] has made significant strides with Proficy Historian. With features like decentralized data collection, excellent data volume handling, scalability from on-premise to hybrid Cloud to full Cloud, plus remote management, and an OPC UA Server, Proficy Historian is now one of the leading historian products on the market."*

*- LNS Research*

# PROFICY® HISTORIAN 2024



## Powerful industrial time-series and A&E data collection for cloud-based or on-premise storage & analysis

- Collects industrial data at very high speed, normalizes data and stores it securely, distributes, and allows for fast retrieval and analysis
- 24/7 availability: avoid downtime and information gaps; stability and reliability for continuous improvement data analysis and critical apps

### New in Version 2024

#### Enterprise Scale

- Horizontal scalability enhancements for on-prem deployment; cloud hyper-scalability to allow deployment at enterprise scale; collector enhancements for extended connectivity (OPC UA upgrade OPC UA SDK stack Python collector, REST interface enhancements, RESTful API – Swagger, REST API enhancements); security enhancements (Simplify strict client authentication, UAA/LDAP support, datastore level security); platform SCADA interface to pull data from Historian

#### Great UI for a Great UX

- Configuration Hub enhancements, enterprise model support, ETL performance benchmarking and improvement, common certificate management and plugin registration, installation enhancements

#### More Out-of-the-Box Capabilities

- Improved collector redundancy and failover behaviors, added the ability to reset overruns without restarting collectors, made data archive

location flexible, added Remote Collector Management to Historian for Cloud, Sparkplug B-MQTT enhancements

#### Ready-to-Use AI/ML Predictive Analytics

- Trending Enhancements
- Quicksight Q interface in AWS

### New in Version 2023

#### Connected Worker

- Historical trend analysis enhancements (via Proficy Operations Hub): stacked Y axes, histogram, query by filter

#### Enterprise Scale

- AWS and Azure cloud-native Historian options
- Disaster recovery site data replication/failover
- Parquet file export for enterprise analytics and reporting

#### Flexible Deployment & Centralized Management

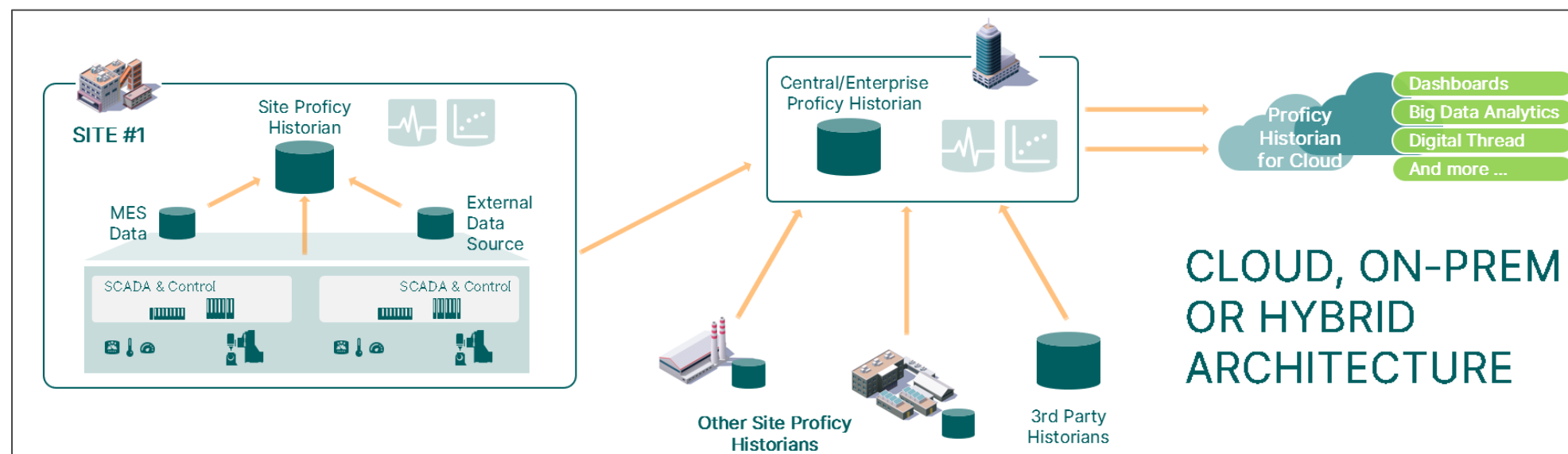
- Dramatic re-envisioning and redesign of Admin tools to simplify administrative tasks and save time – including tag selection made easy, robust query builder, and better visualization
- Model integration with iFIX and Operations Hub
- Enhanced connectivity with MQTT V5 support: flexible message structure and Sparkplug b support
- Common security management across portfolio

Proficy Historian: Best-in-class industrial data management that scales to 100 million tags

- On-prem or cloud, featuring the world's only cloud-native historian innovation to align with IT strategies
- Easily deployable mirrored architecture based on GE Vernova's U.S.-patented highly efficient and secure storage format
- Alarms & Events database, allowing retrieval of A&E in correlation to time-series data
- Browser-based central administrative console and trend client
- Multi-threaded for high performance
- Scales from small to 100 million tags – including model for cross-enterprise data access
- Ability to perform complex, multi-site industrial information management
- Hybrid on-premises / third-party cloud data model: AWS, Azure, Google, and more
- Data in context: Proficy Operations Hub Server and HTML5 Historian Analysis run-time application available for license at no additional cost with Proficy Historian Standard or Enterprise versions
- Native collectors including MQTT collector
- Store and forward capability
- Historian ETL – Extract, Transfer, Load
- Remote Collector Management with centralized admin

- High availability for superior reliability
- Highly efficient data compression: collector compression at the source (deadband) and archive compression at the server
- Flat or traditional hierarchical architecture; horizontal scalability with distributed server architecture
- Secure-by-design storage
- Flexible model structure
- Condition-based collection
- Server-to-server aggregation
- OPC UA server
- UAA/OAuth2 Java Web Token security model
- Server-to-Azure IoT Hub Distributor
- Cloudera certified method to move and query data in HDFS / Hadoop to Parquet
- APIs to track version information of collectors, Query Results API, Write Tag API, Rename API
- Public REST API and Java API
- One-click configuration: CIMPLICITY and iFIX
- Excel Add In
- Little to no DB admin required
- Support for storage of Future Data

Consult [product documentation](#) for hardware/software requirements. Confirm standard vs optional features with GE Vernova representative. Specifications are subject to change without notice. Results and functionality vary, depending on existing hardware/software, applications, implementation, and other factors.



LEARN MORE ABOUT PROFICY HISTORIAN

GET FREE TRIAL

WATCH HISTORIAN 2024 WEBINAR